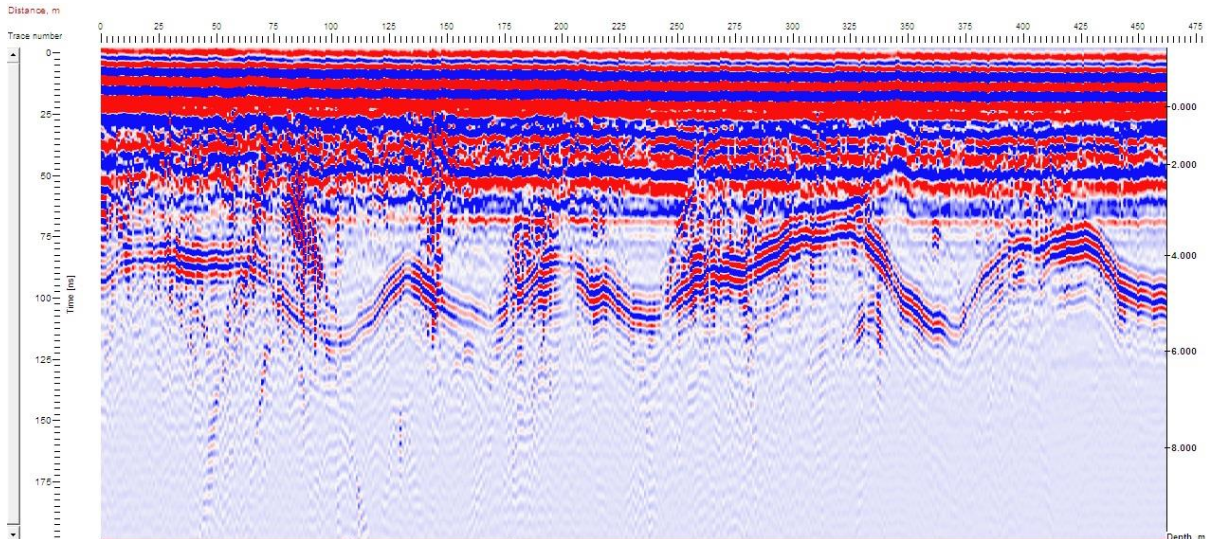


GROUND PENETRATION RADAR SYSTEM (GPRS)



Established in year 2014 within the Department of Earth Sciences, the **Ground Penetration Radar system (GPRS)** facility signifies a pivotal advancement in subsurface geological exploration. Supported by the Ministry of Earth Sciences, Government of India, this cutting-edge facility was acquired through the leadership of Prof. Bikram Singh Bali, spearheading the project "Active Fault Delineation in Karewas of Kashmir using Ground Penetration Radar" Functioning as a versatile instrument, the GPRS facility facilitates a wide array of geological studies, ranging from sub surface active fault mapping to

geomorphological investigations and seismic hazard assessments. Its arsenal of high-frequency and high-resolution antennas, including the Rough Terrain Antenna (100 MHz RTA), 200 MHz, and 500 MHz variants, equips researchers with unparalleled capabilities for detailed subsurface analysis. Notably, the instrument's adaptable design, featuring both cart and wheel setups, ensures optimal manoeuvrability across diverse terrain, enhancing accessibility and effectiveness in field operations. By harnessing the power of GPRS technology, researchers are empowered to unravel the complexities of the Earth's subsurface with precision and depth.