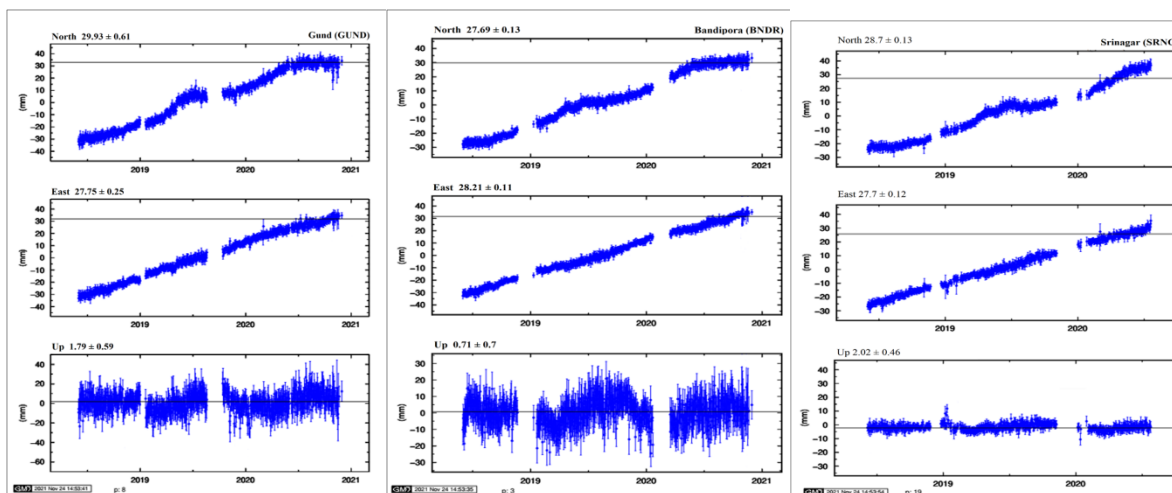
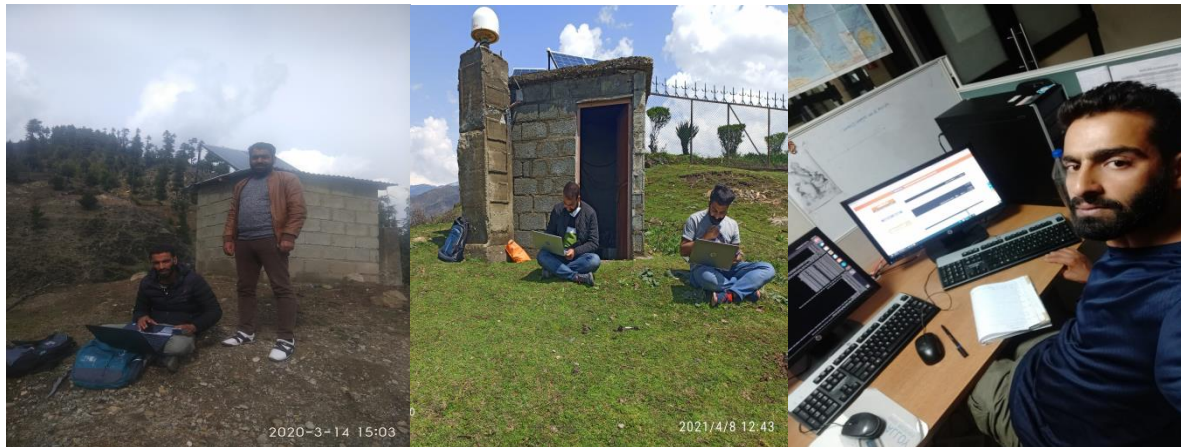


GLOBAL POSITIONING SYSTEM (GPS)



The **GPS** facility was established at the Department Earth Sciences in year 2008 for crustal deformation and Earthquake hazard assessment studies. This instrument facility is with the support of Ministry of earth sciences Government of India. The instruments were purchased by Prof. Bikram Singh Bali (Principal Investigator) in the Project “Seismic Hazard assessment of Kashmir Himalayas using Geological, Seismological and geophysical data”. The instrument has applications in Active fault studies, strain budget calculation, crustal deformation

and Seismic Hazard assessment studies. Also, the instrument has capability in earthquake studies. We have sixteen GPS stations that are installed throughout Kashmir Valley. All the stations give us continuous data at an interval of 30 second.